

# Tutorial: RT10 STYX in Competitions

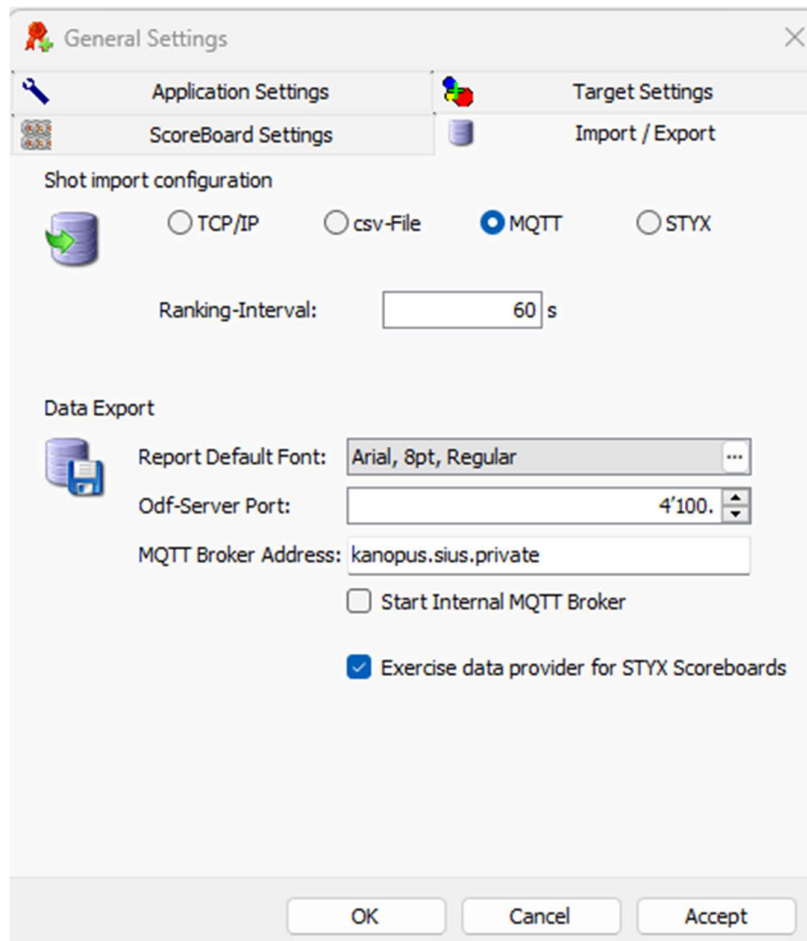
## Introduction

The RT10 STYX has a different interface than the former LON devices. Therefore it can not be controlled bei SIUSData. To be able to handle competitions from SIUSRank the import has to be configured properly.

## Setup in SIUSRank

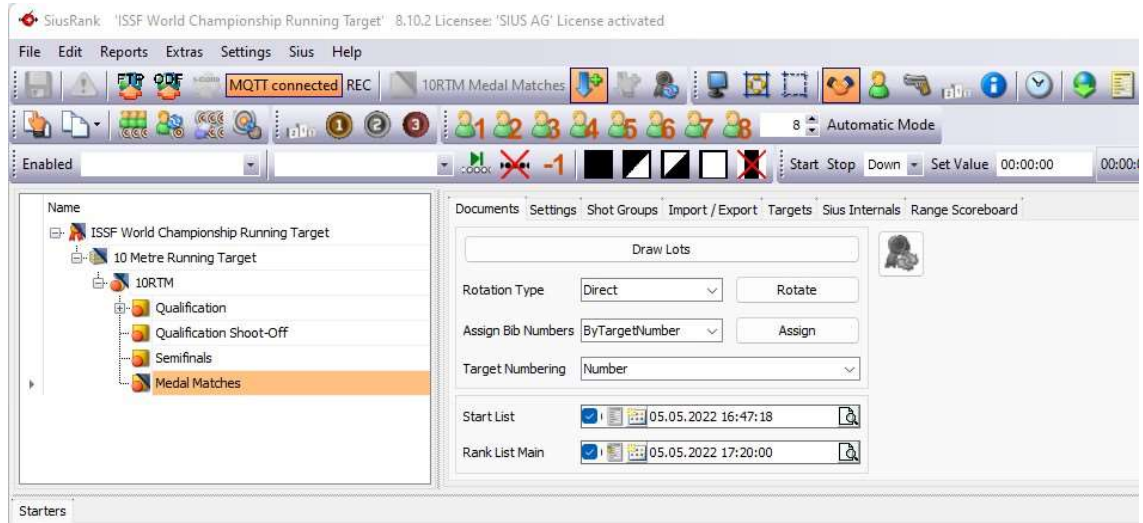
From Version 8.10.2 or newer the import in SIUSRank is supported. The following settings have to be set accordingly:

- Import / Export: Shot import configuration MQTT
- MQTT Broker Address: kanopus.sius.private
- Start Internal MQTT Broker: unchecked



## Import from RT10 STYX

To start the import MQTT must be connected and the shot import for the active phase has to be enabled.



Only shots which are fired after the connection has been established are recorded. The operator has to make sure to be connected before the competition starts.

## Setup RT10 STYX

The setup for the RT10 STYX doesn't change much. The selection of the program is done on the device next to the athlete. The hardware installation also stays the same. This means that the printer has to be plugged in at the athlete's device.

With the click of the button "Enter PIN" the operator is able to enter a start number. The matching for the shots in SIUSRank is done with this assigned number. In addition the operator has the ability to start the run from the device. The controlling of the program itself is still done from the athlete's device.