

Tutorial: Operate STYX Lane Scoreboards from SIUSRank

Introduction

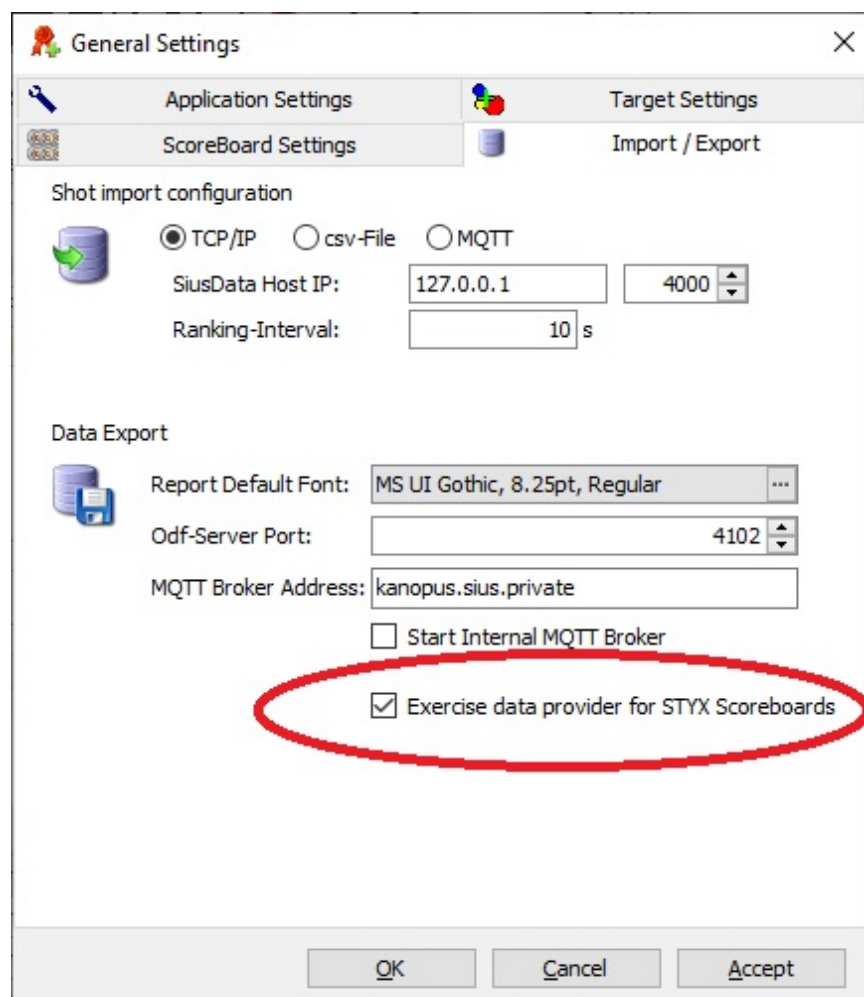
To control STYX Lane Scoreboards in Finals you need SIUSRank.

The Competition Controller has an additional Tab with the Title 'Lane Scoreboard'.

Setup the STYX Range for Finals with STYX Lane Scoreboards

The STYX Lane Scoreboards are fed the data directly from the Control Unit. In the case of finals this is not sufficient and some additional steps must be taken to route the data from SIUSRank.

In General Settings go to Import/ Export and check the "Exercise data provider for STYX Scoreboards" and connect to MQTT.



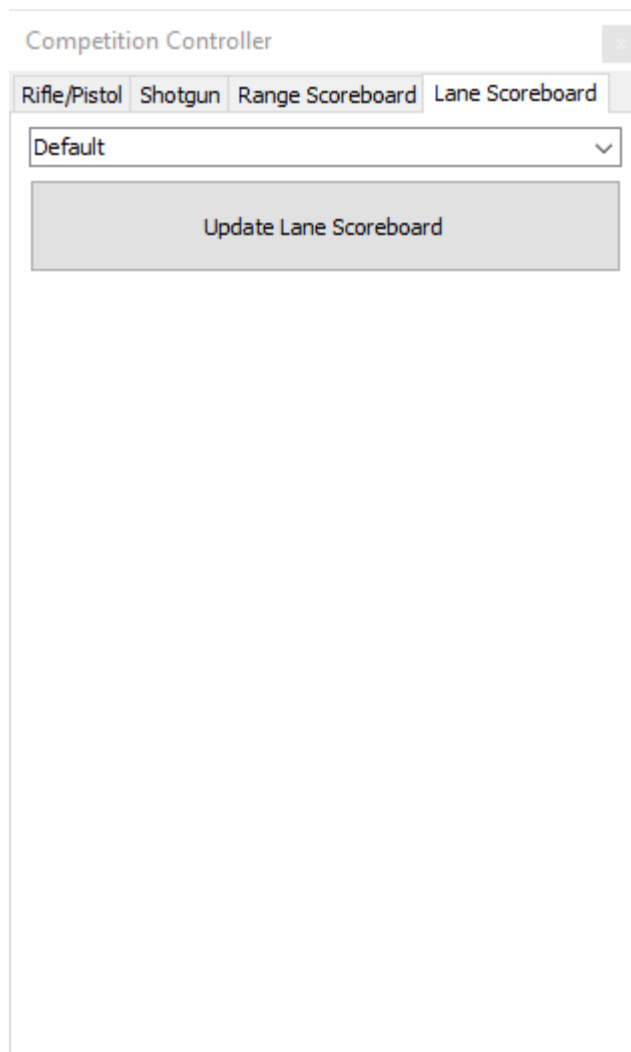
When SiusRank is connected to MQTT the communication channel under `kanopus.sius.private/range/lanespectatorviewsource` switches from `ExerciseController` to `SiusRank`.

As soon as MQTT is not connected anymore it switches back to `ExerciseController`.

Faces in STYX Lane Scoreboard

- Default: Default Face which should be used if not in finals.
- Finals - Elimination: Can be used in standard Finals. It basically shows the last shot value on a target picture.
- Finals - Hit Miss: Used in RFP and SP Finals. The Hit/Miss Pattern is shown.
- None: Neutral Face which basically shows nothing.

Select the preferred face in the Combo Box. The update is sent with a click on the button.



Hints

- Manual Target Mapping must be enabled for specific situations (mostly in Finals)
- Mappings which exist but have not starter assigned are set to the None Face in every case
- “Exercise data provider for STYX Scoreboards” has to be checked in General Settings under Import/ Export
- Connect to MQTT

