

---

## **Windows driver install manual**

---

Version No. : Ver 1.01

---

DATE : 2015/7/1

---

— Contents —

1. Introduction.....	3
2. Terms and conditions.....	3
3. Operating environment .....	4
4. Install the driver (USB Interface) .....	5
5. Install the driver (COM or LPT port).....	11
6. Serial interface setting .....	17

## 1. Introduction

Please read the following terms and conditions of use before installing the software.

During installation, you are assumed to have agreed to the following terms and conditions of use.

If you do not agree to those, stop installing the software and delete all distributed files.

Although I created to make doubly sure about the contents of this book, please connect, if there should be a point with an error and mind.

## 2. Terms and conditions

This printer driver is owned by SANEI ELECTRIC INC. (hereafter SANEI), and SANEI holds the copyright and other related rights for the product.

SANEI grants the right of use of the printer driver to users so that they may use the products of SANEI in relation to the printer driver.

This printer driver cannot be modified in any form in whole or in part. However, it can be copied or distributed as you desire.

SANEI assumes no responsibility with the failure of printer driver and printer driver it self.

SANEI assumes no responsibility with respect to possible direct or indirect loss or damage resulting from use of the printer driver.

SANEI may change the specifications of the printer driver without prior permission from or notification of the user.

※ Microsoft Windows is a registered trademark of the Microsoft Corporation in the United States.

### 3. Operating environment

#### 3-1. Operating systems

Microsoft Windows 8 / 8.1 (32bit/64bit)

Windows 7 (32bit/64bit)

#### 3-2. Applicable Interface

Serial / Parallel / USB

#### 3-3. Printer Function setting

The following model should check that the items of a memory switch or DIP switch are the following setup.

- SK1-31/SK1-32/SK1-21/SK1-41 Series

OFFLINE BUSY = OFF

MARK DETECTION = OFF

MARK RE-DETECTION = OFF

USB DEVICE CLASS = PRINTER

COMMAND MODE = MODE A

- BL2-58 Series

COMMAND MODE = MODE A

OFFLINE BUSY = OFF

USB DEVICE CLASS = PRINTER

- SP1-21 Series

OFFLINE BUSY = OFF

USB DEVICE = PRINTER

Printer mode = Normal operation

- SP2-21 Series

OFFLINE BUSY = OFF

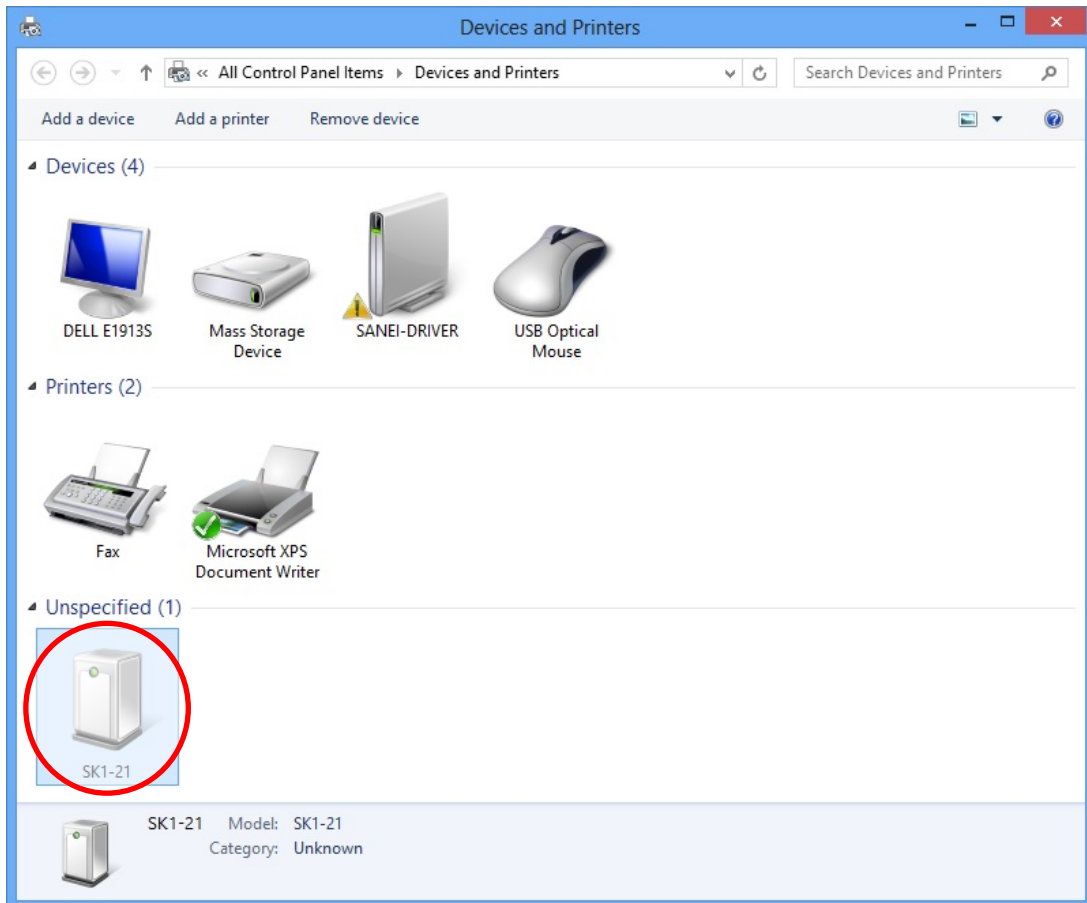
USB CLASS = PRINTER

#### 4. Install the driver (USB Interface)

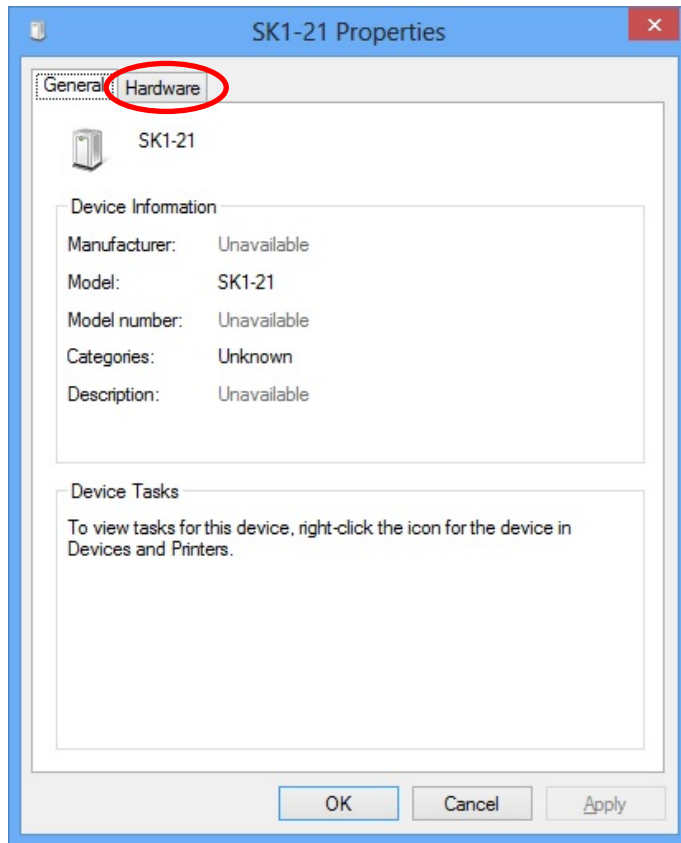
The procedure explained below is a sample installation of SANEI SK1-21 driver.

4-1. Power on printer and connect an USB cable to your PC.

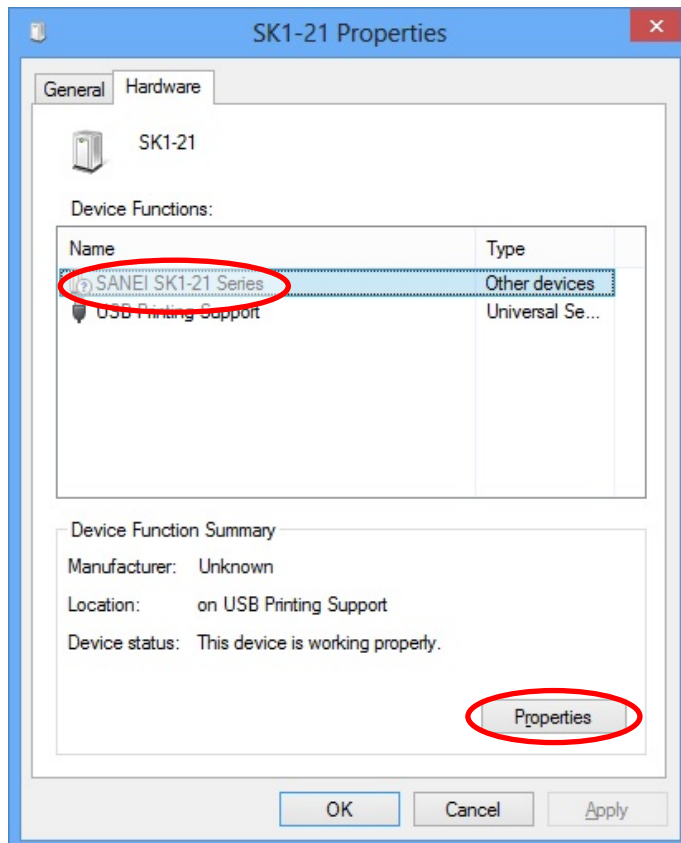
4-2. “Unspecified”SK1-21 appears on “Devices and printers”.  
Right-click and select “Property”.



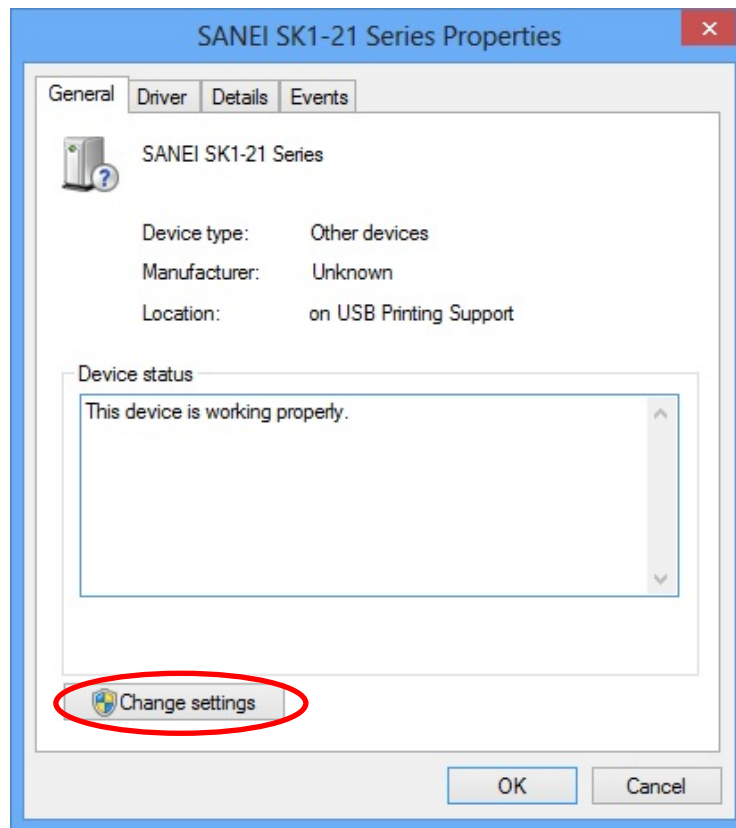
4-3. Click “Hardware” tab.



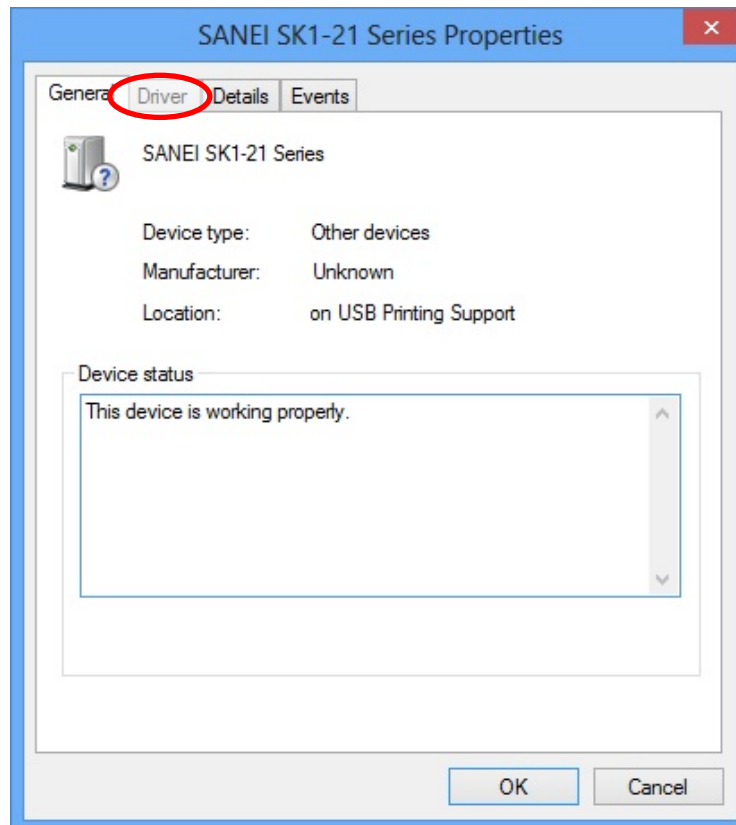
4-4. Select “SANEI SK1-21 Series” and click “Properties”.



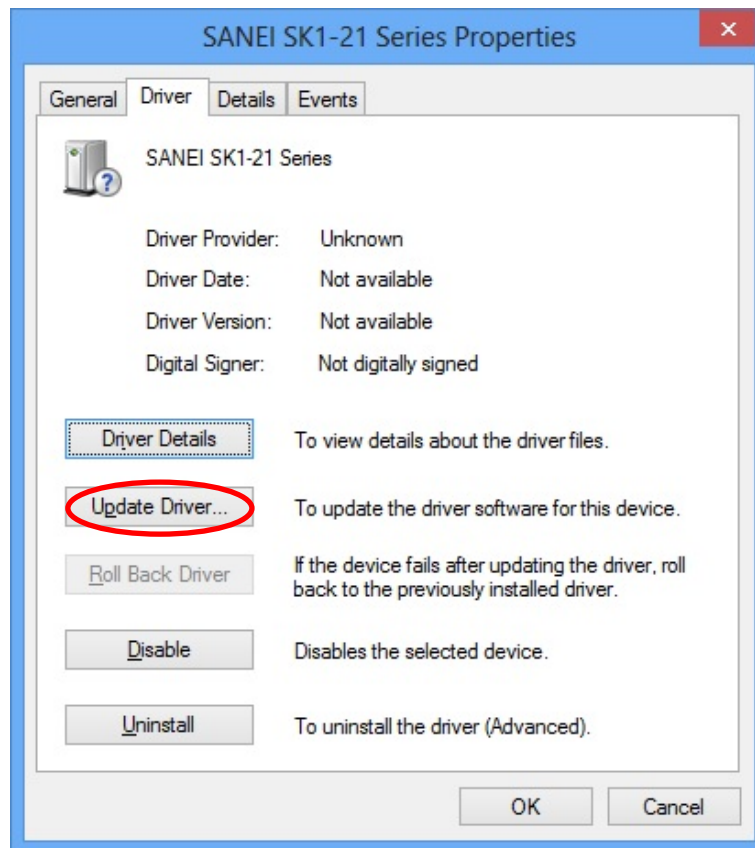
4-5. Click “Change settings”.



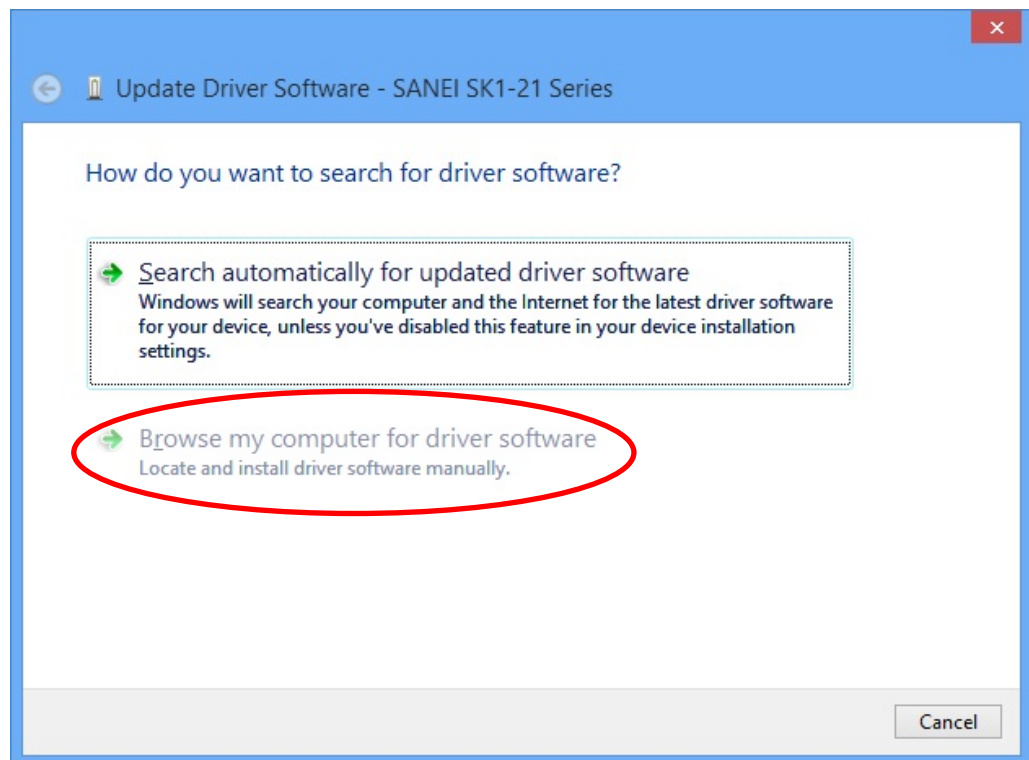
4-6. Click “Driver” tab.



4-7. Click "Update Driver".

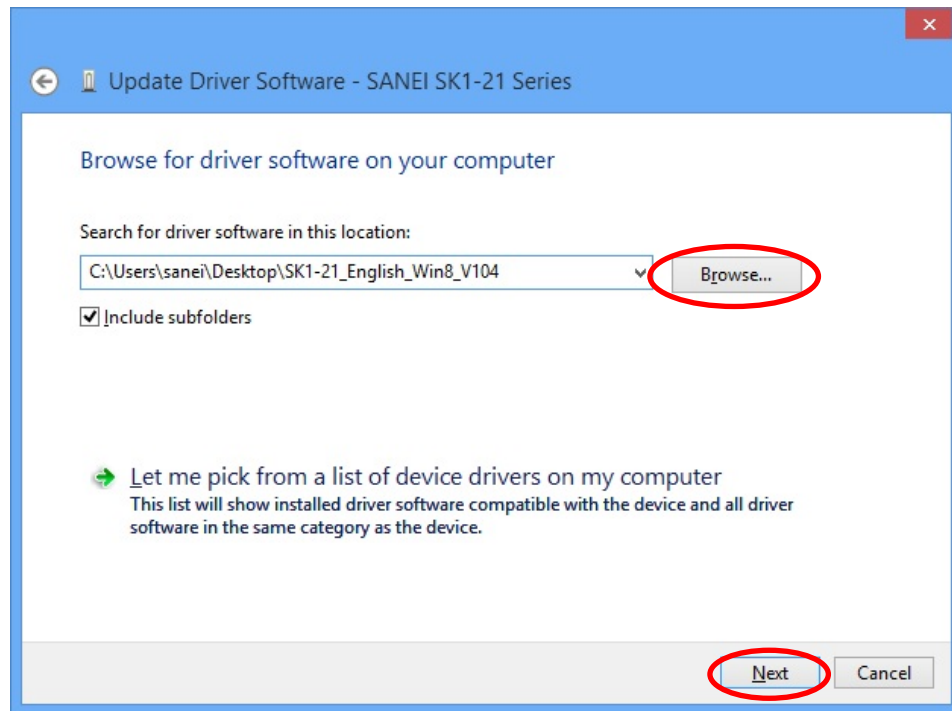


4-8. Click "Browse my computer for driver software".

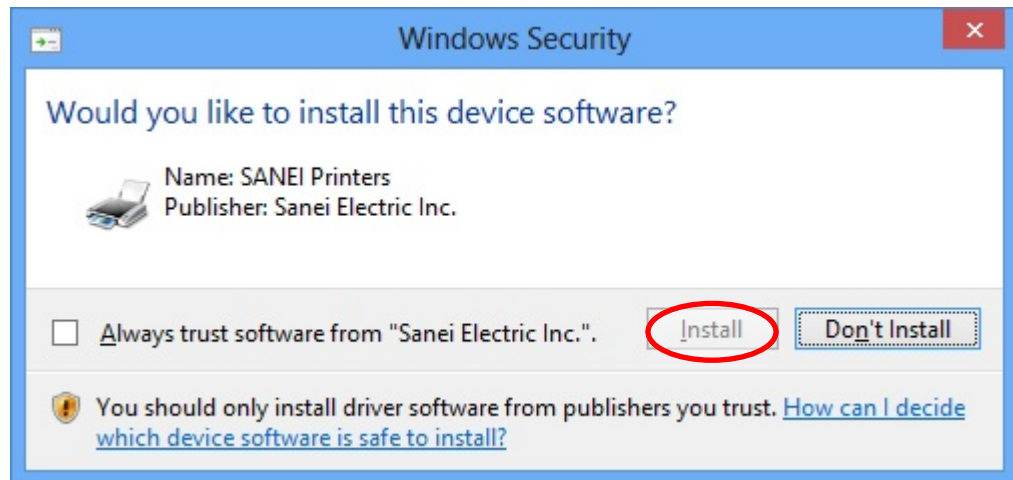




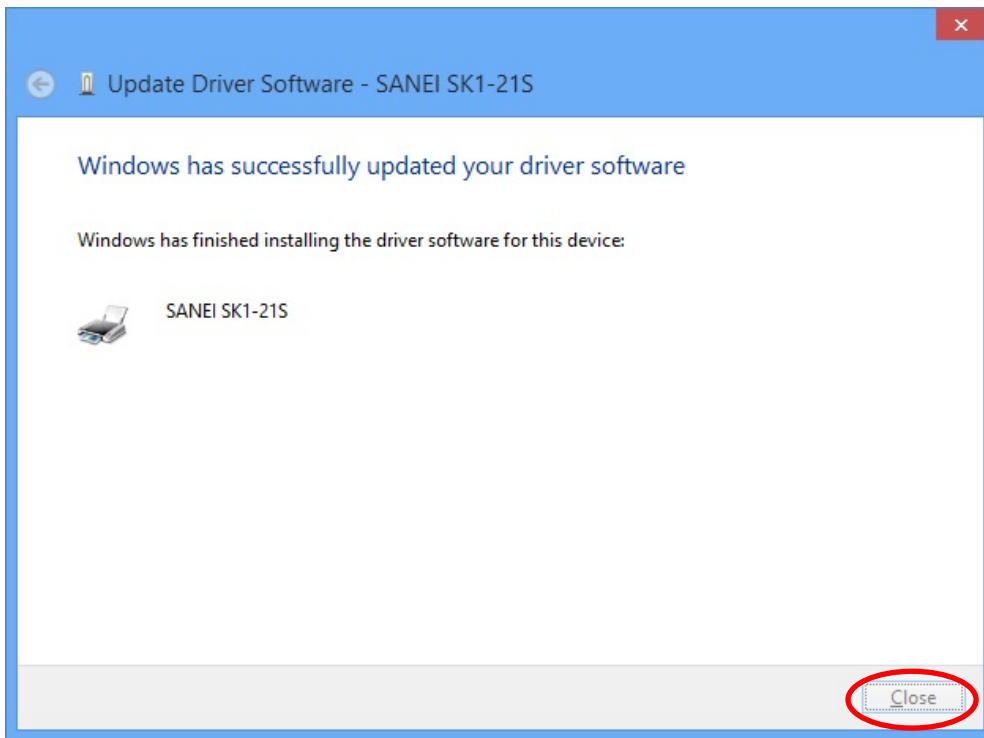
4-9. Click “Browse” and select a folder the driver is, and click “Next”.



4-10. Click “install”.

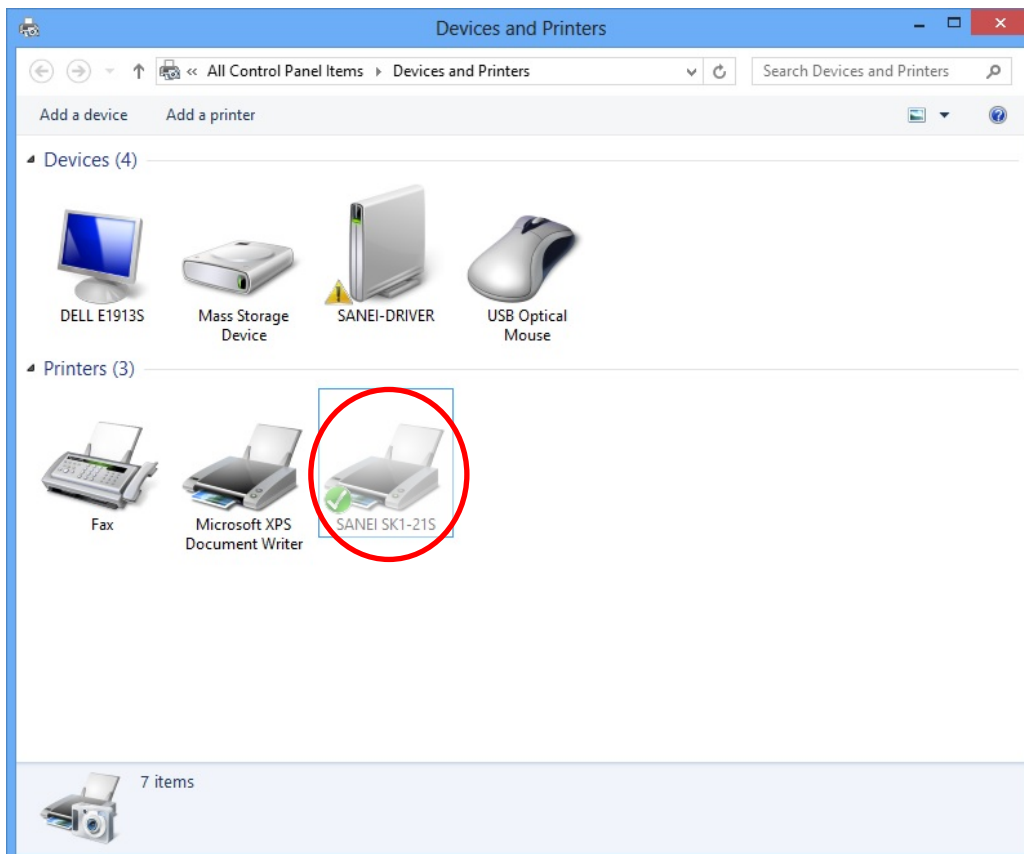


4-11. After the install process is finished, click “Close”.



4-12. if the installed device is displayed on “Devices and Printers” – “printers and Faxes”, the install process is finished.

REMARK: “SANEI SK1-21S” is installed through this procedure, for example.

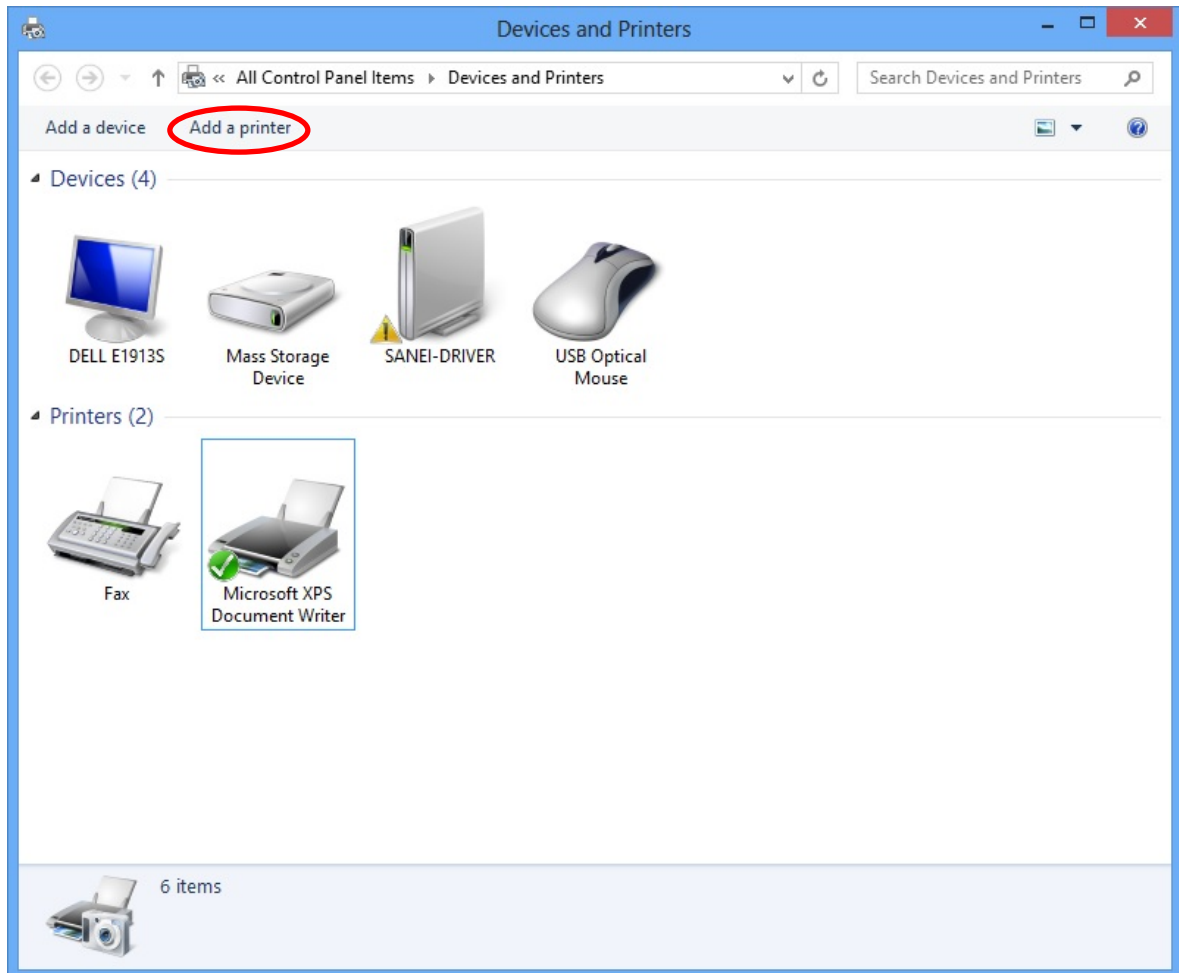


## 5. Install the driver (COM or LPT port)

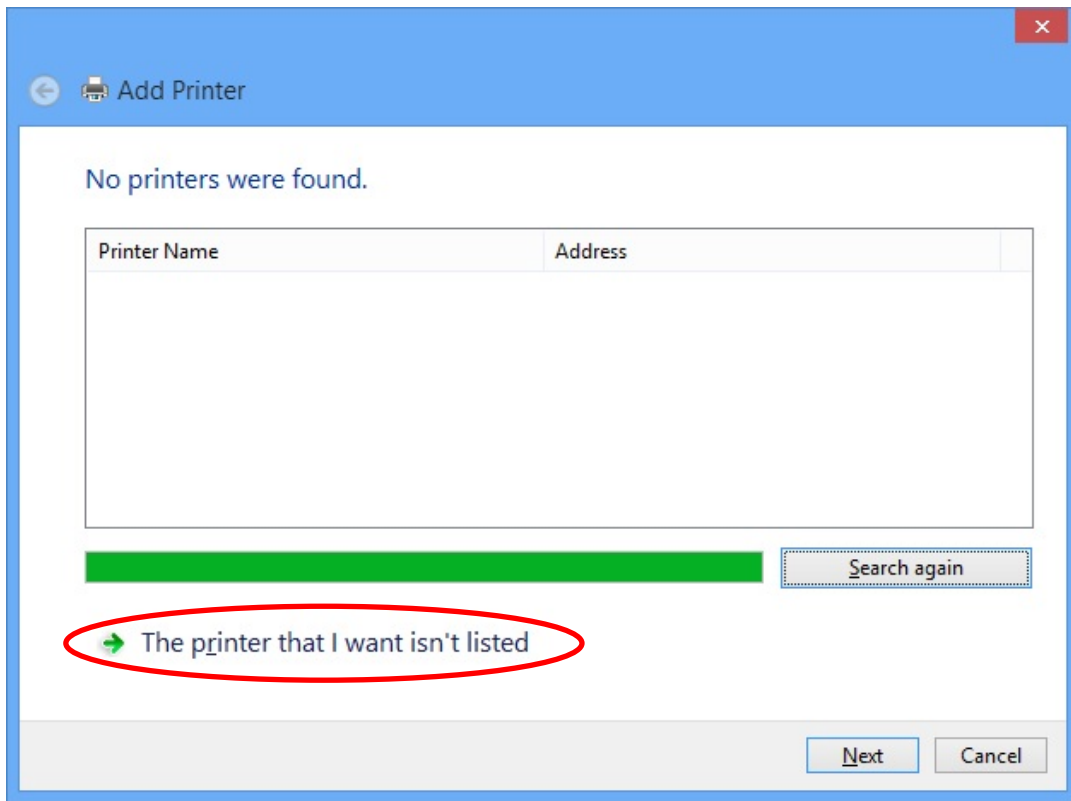
The procedure explained below is a sample installation of SANEI SK1-21 driver.

5-1. Click “Start” menu, and select “Devices and Printers”.

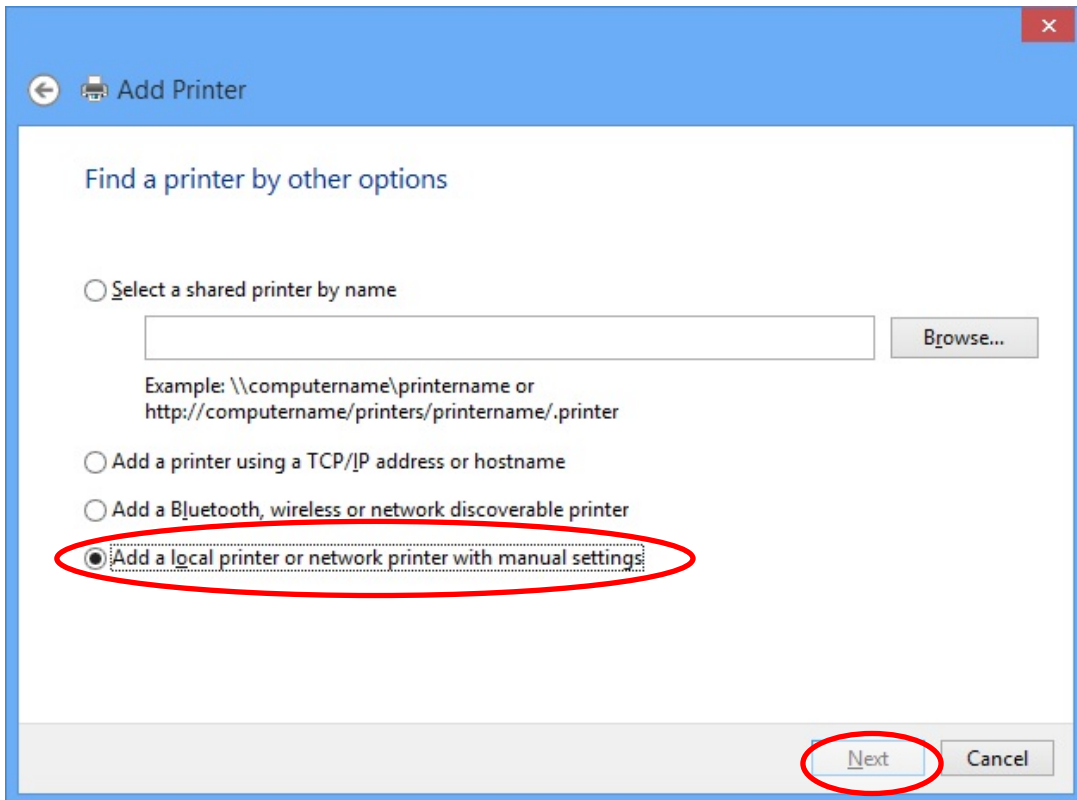
5-2. Click “Add a printer”.



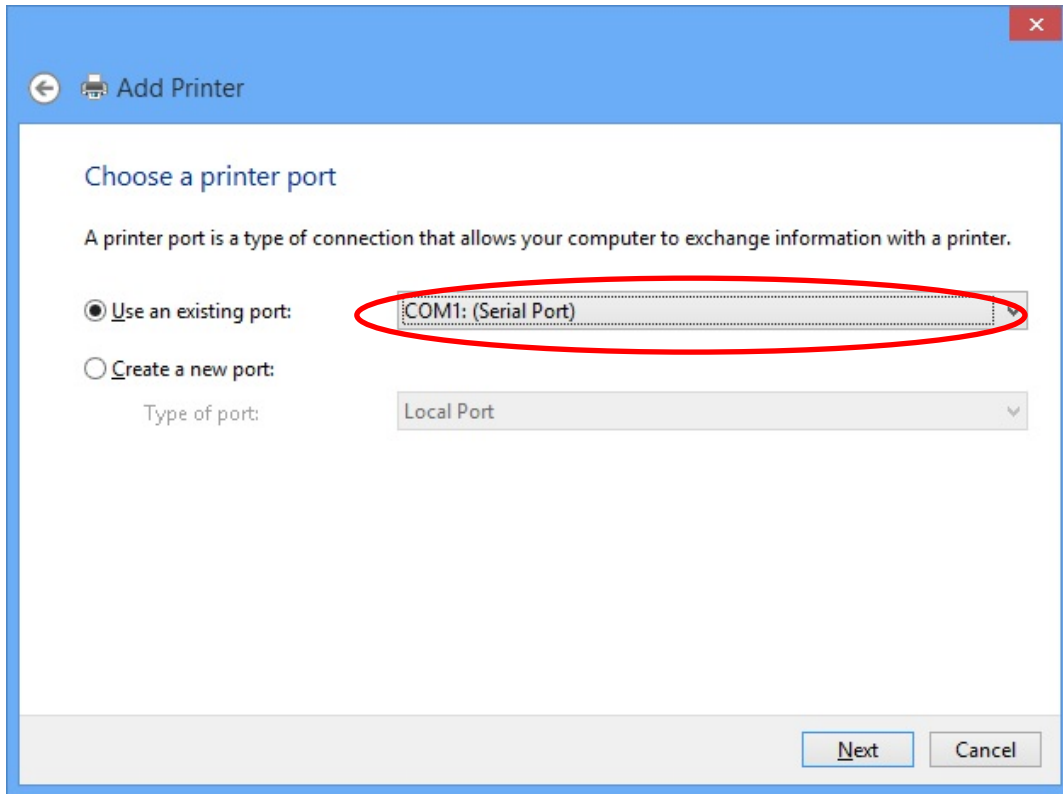
5-3. Click “The printer that I want isn’t listed”.



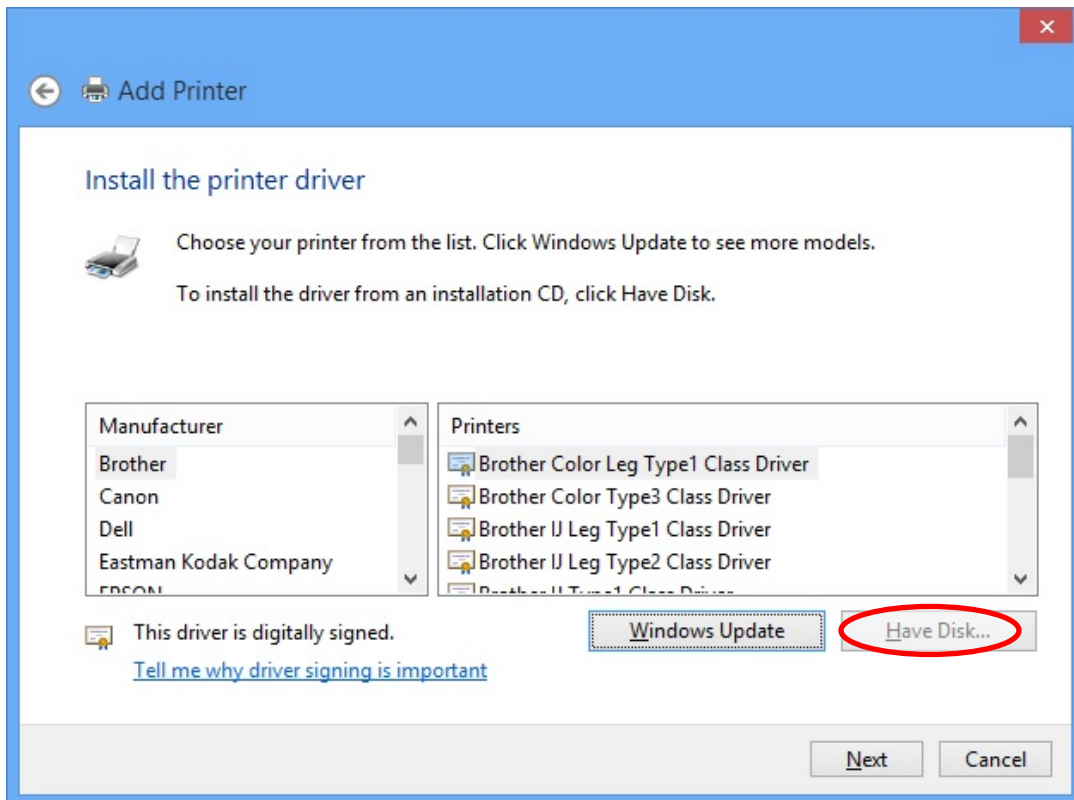
5-4. select a “Add a local printer or network printer with manual settings” and click “Next”.



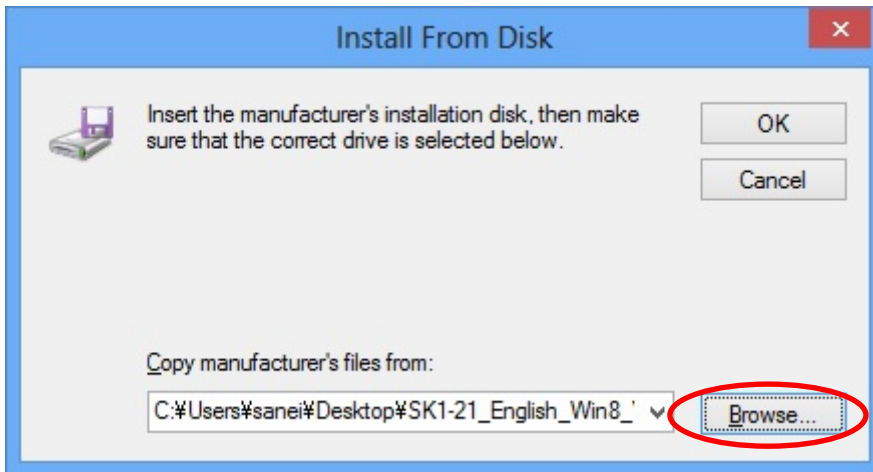
5-5. In case of “Serial interface”, select a COM port and click “Next”.  
In case of “Parallel interface”, select a LPT port and click “Next”.



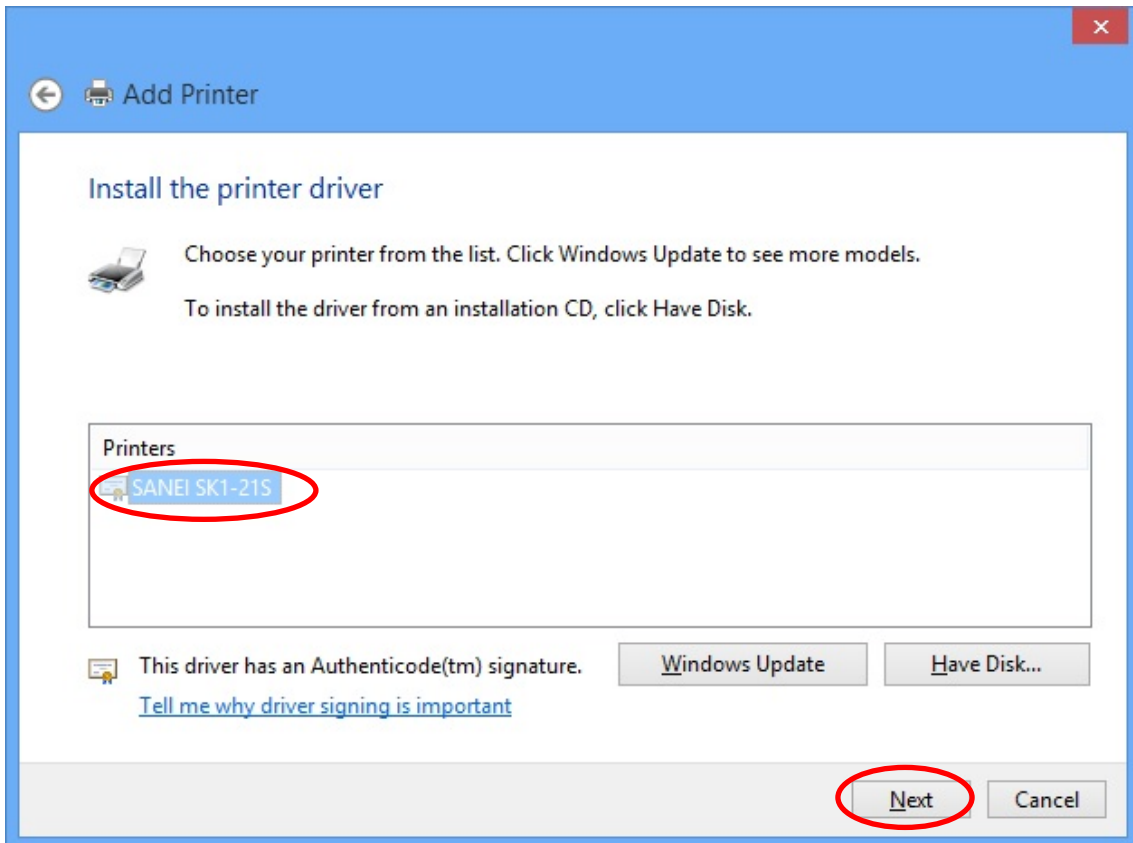
5-6. Select “Have Disk”.



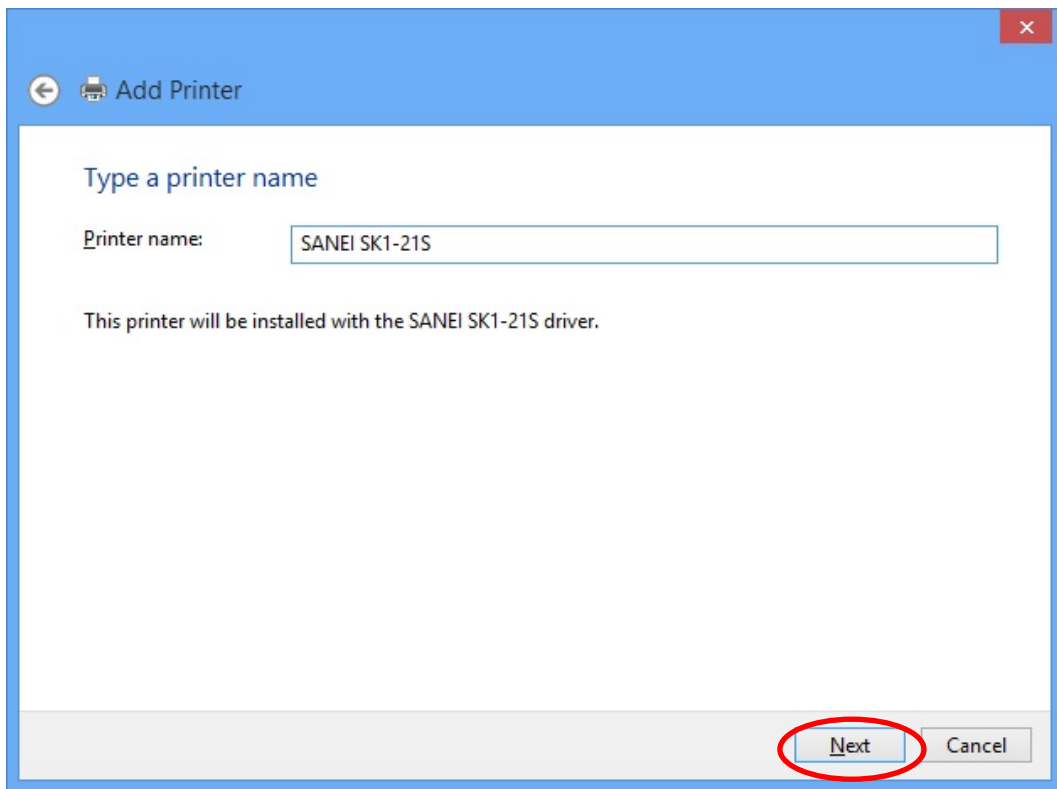
5-7. Click “Browse” and select a file the driver is, and click “OK”.



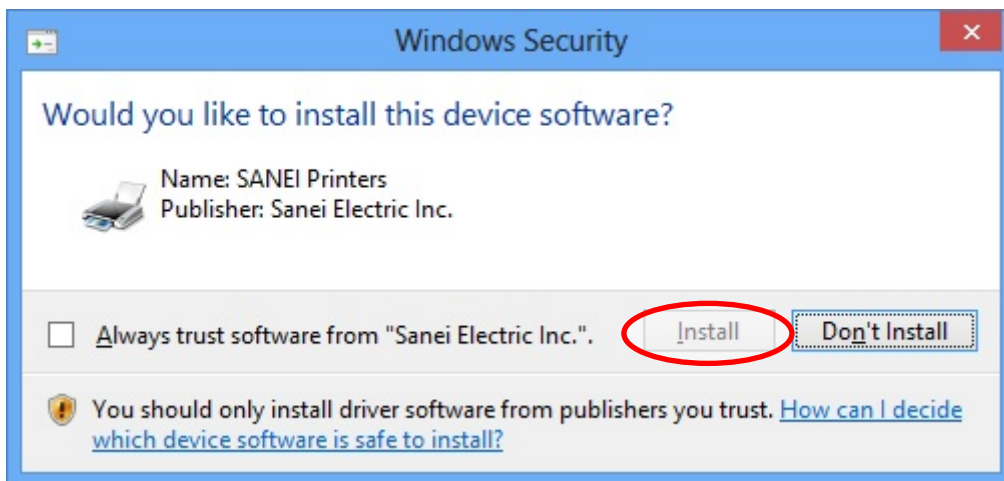
5-8. Select a driver, and click “Next”.



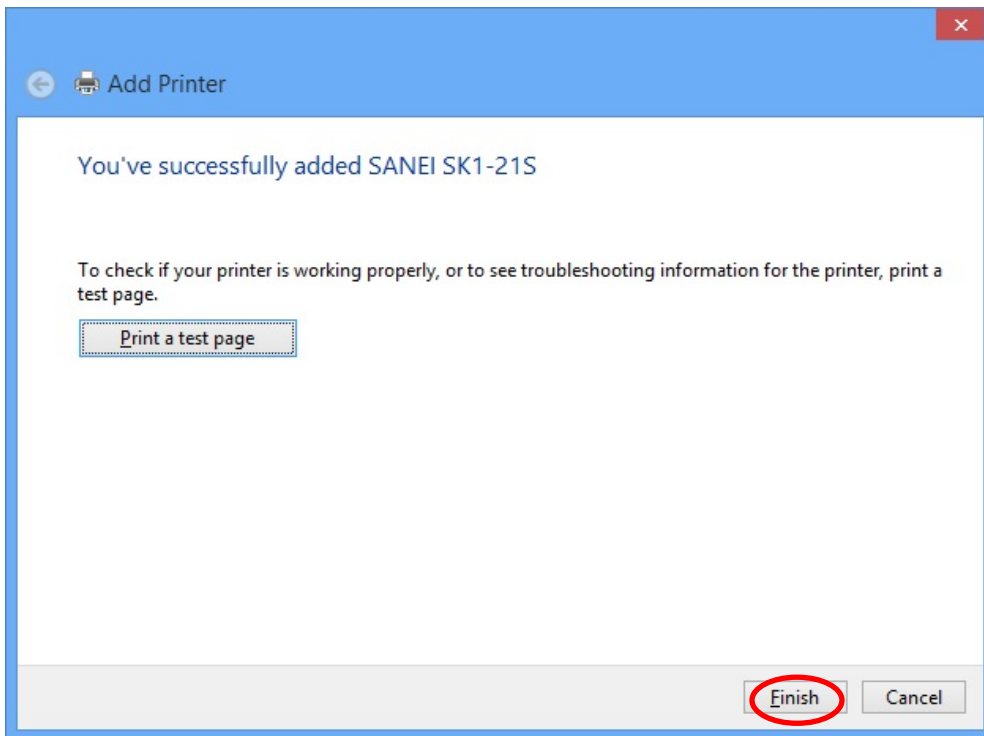
5-9. Click "Next".



5-10. Click "Install".

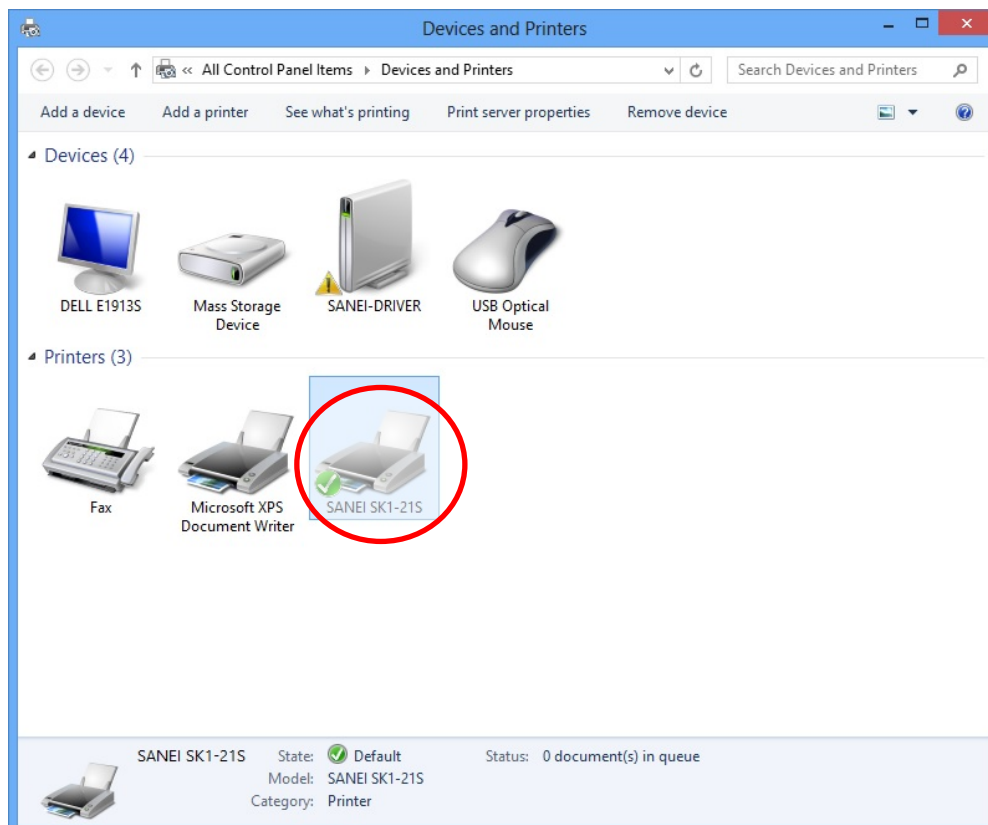


5-11. Click “Finish”.



5-12. If the installed device is displayed on “Devices and Printers” – “printers and Faxes”, the install process is finished.

REMARK: “SANEI SK1-21S” is installed through this procedure, for example.





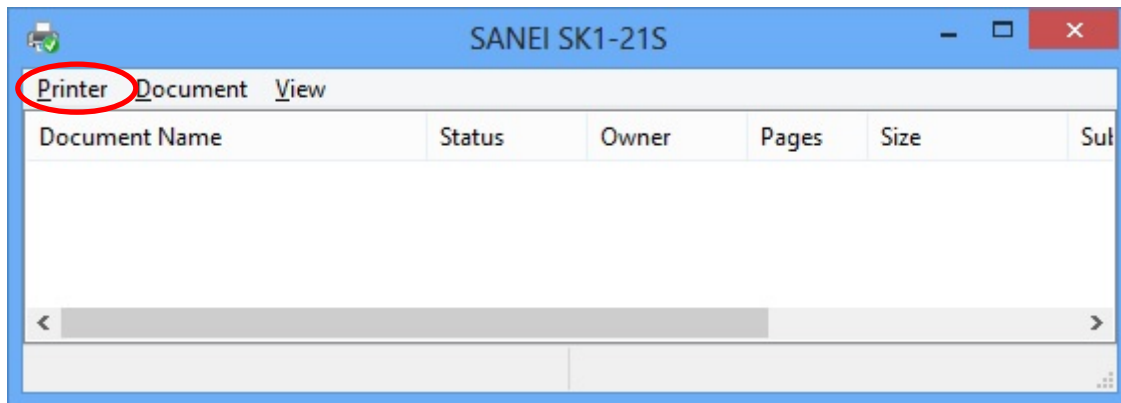
## 6. Serial interface setting

The serial interface needs to unite a setup of a host computer and a printer.

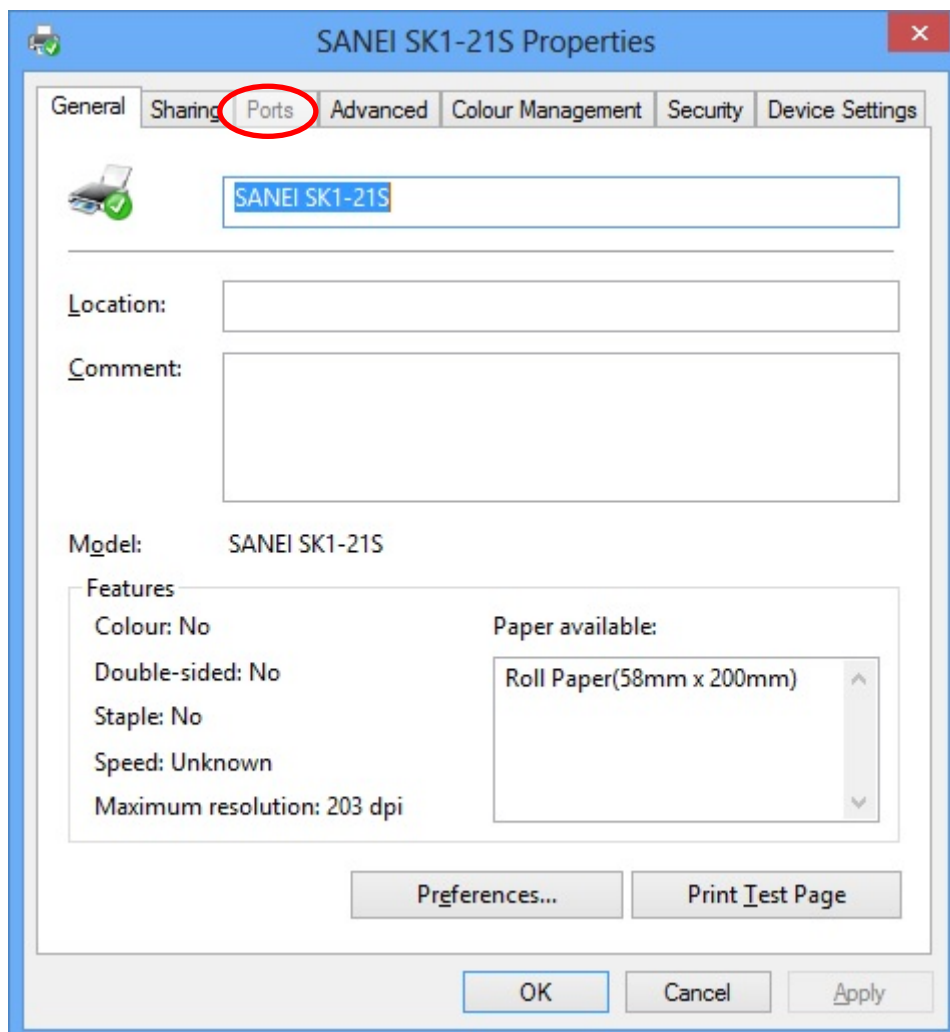
The setting method of a host computer is as follows.

※Please refer to the technical manual for printer about the setting method of a printer.

6-1. Click “Printer” menu, and select “properties”..

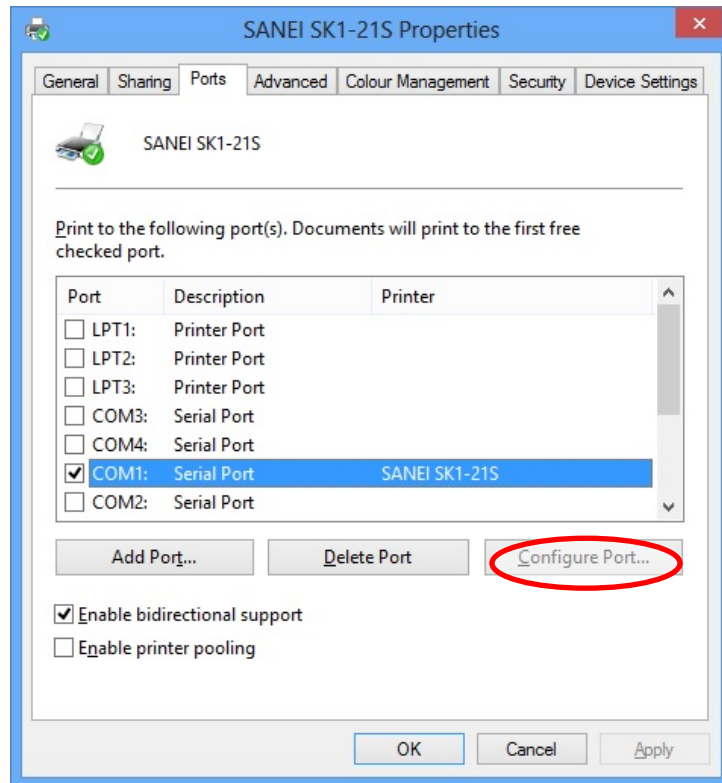


6-2. Click “Ports” tab.



6-3. Click "Configure Port".

※The number of the COM port to be used changes with a host computer.



6-4. Unite a setup of a serial port and click "OK."

